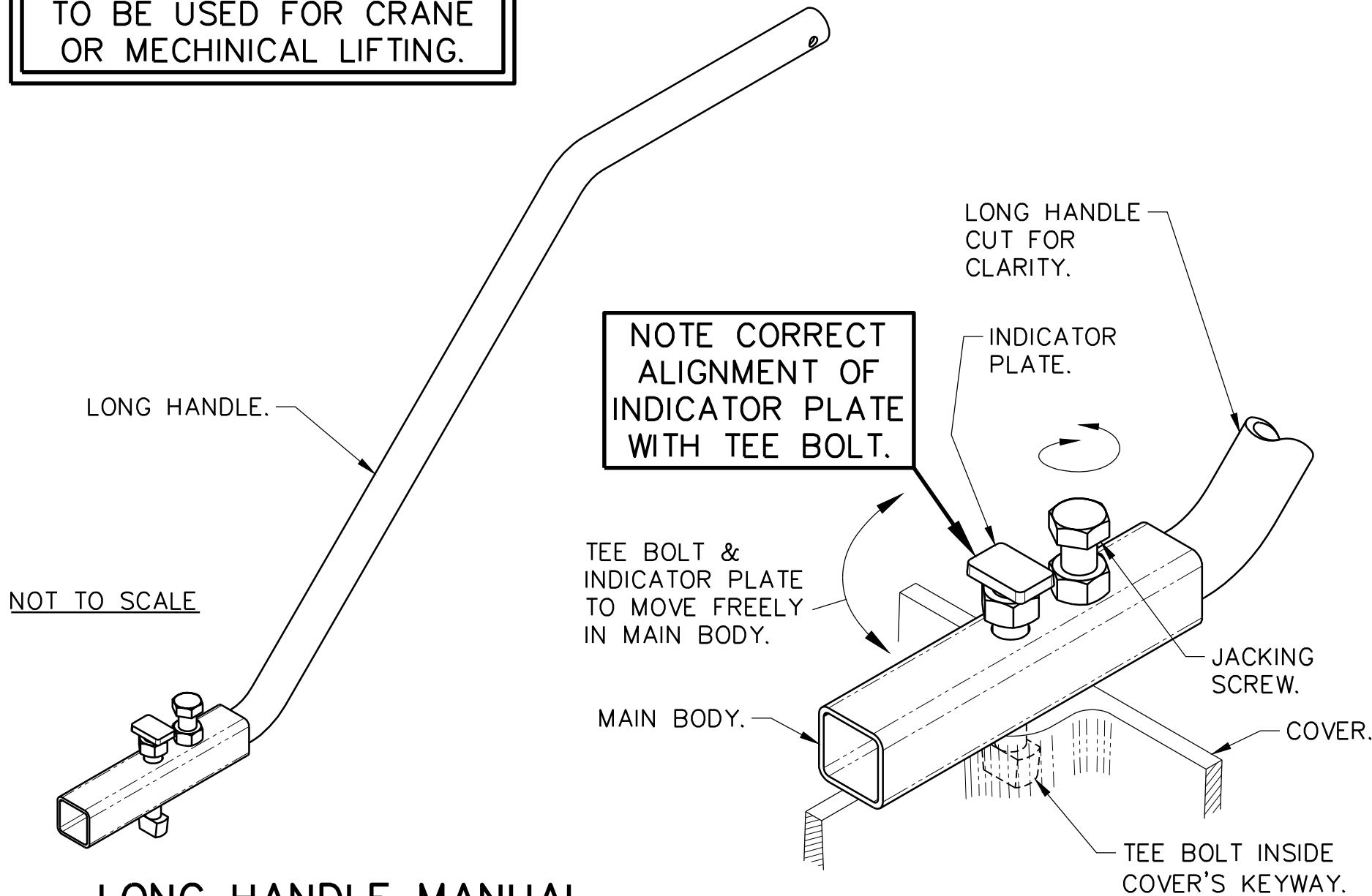


MANUAL LIFTING KEYS NOT
TO BE USED FOR CRANE
OR MECHINICAL LIFTING.

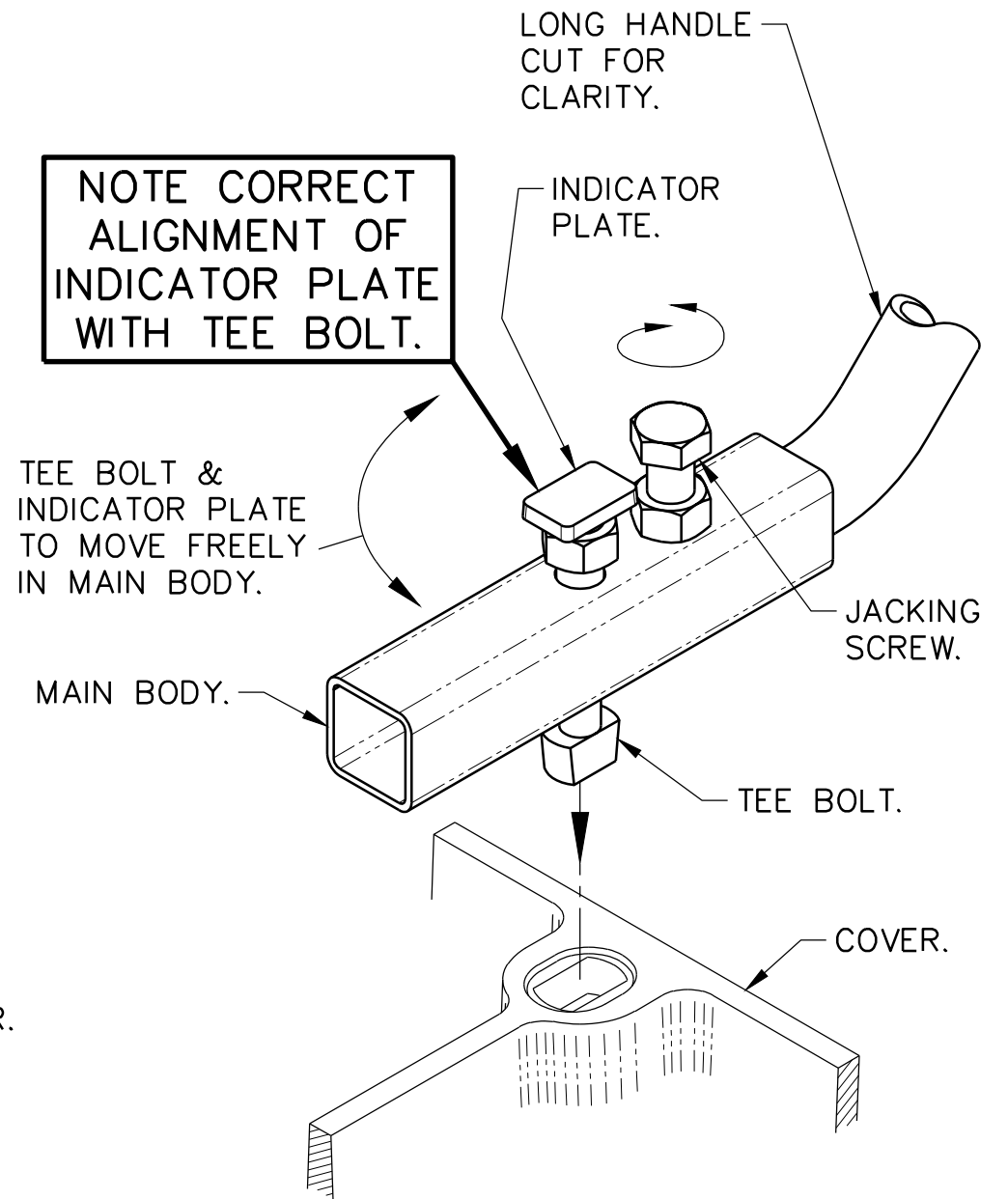


LONG HANDLE MANUAL LIFTING KEY

PART NUMBER: 'K/GLH' = SET OF 2 No. THUS
PLUS SPANNER.

APPROX WEIGHT = 7KG/SET

ISOMETRIC VIEW RIGHT HAND VIEW SHOWN IN OPERATING POSITION SOME HIDDEN DETAILS REMOVED FOR CLARITY NOT TO SCALE



ISOMETRIC VIEW RIGHT HAND VIEW SHOWN IN INSERTION POSITION SOME HIDDEN DETAILS REMOVED FOR CLARITY NOT TO SCALE

Abbreviations:

	=	Centre Line
NOM	=	Nominal
C/O	=	Clear Opening
E/B	=	Standard End Bar
E/P	=	End Plate
O/A	=	Overall
T/C	=	Top of Cover
W/O	=	We Offer
I/P	=	Intersection Point

GATIC

Specialised Engineering. Special Advice.

Poulton Close Dover, Kent
CT17 0UF, England
Telephone: +44 (0) 1304 203545
Fax: +44 (0) 1304 215001
E-Mail: info@gatic.com
Web: www.slotdrain.com
Web: www.gatic.com
A division of ALUMASC LIMITED.

© 2011

Customer

Project

LONG HANDLE MANUAL LIFTING KEY

Works order No.

Drawn by KCG

Checked by S.B.

Date 27:04:12

Job No.

Approved

Scale

1:3

Drawing Number

WC/3639/C